

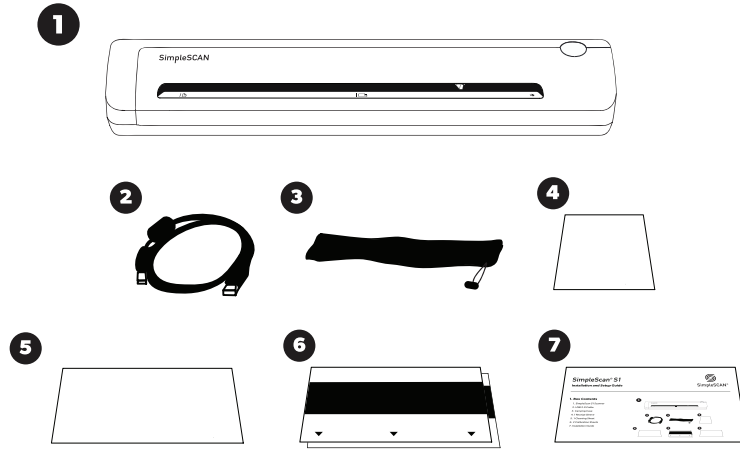
SimpleScan® S1

Installation and Setup Guide



1. Box Contents

1. SimpleScan S1 Scanner
2. USB 2.0 Cable
3. Carrying Case
4. 1 Receipt Sleeve
5. 1 Cleaning Sheet
6. 2 Calibration Sheets
7. Installation Guide



2. Install Drivers and Software

Download software and drivers here:
www.simplescan.com/setup-S1

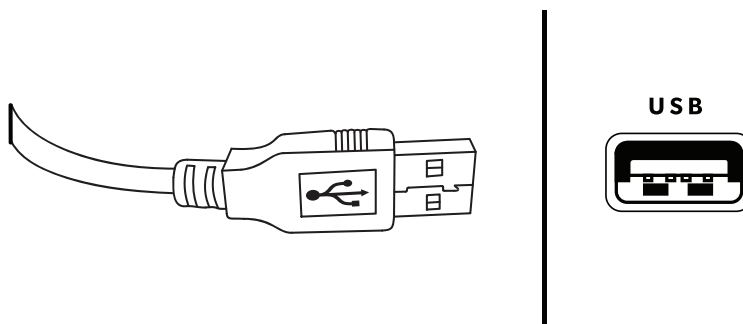


IMPORTANT

Install the downloaded software and drivers before you connect the scanner.

3. Connect the Scanner

USB Cable to PC



For more details on settings, download the complete user guide at www.simplescan.com/setup-S1

Thank you choosing SimpleScan. We appreciate your business and are here to help if you need us.
Need Help? Contact us at www.simplescan.com/contact-us