

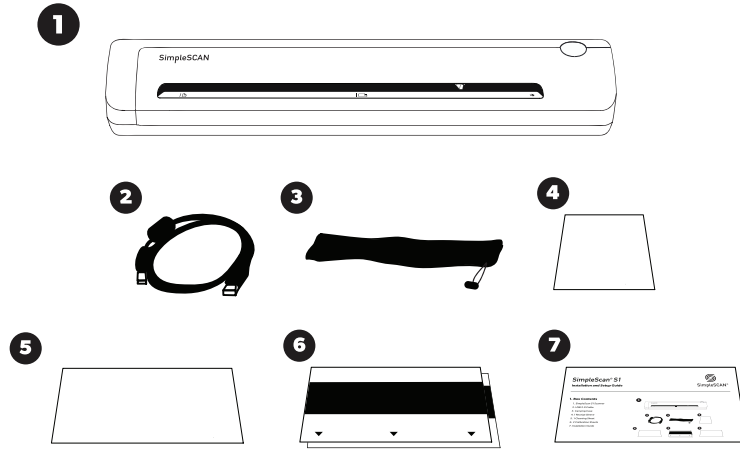
# SimpleScan® S1

## Installation and Setup Guide



### 1. Box Contents

1. SimpleScan S1 Scanner
2. USB 2.0 Cable
3. Carrying Case
4. 1 Receipt Sleeve
5. 1 Cleaning Sheet
6. 2 Calibration Sheets
7. Installation Guide



### 2. Install Drivers and Software

Download software and drivers here:  
[www.simplescan.com/setup-S1](http://www.simplescan.com/setup-S1)

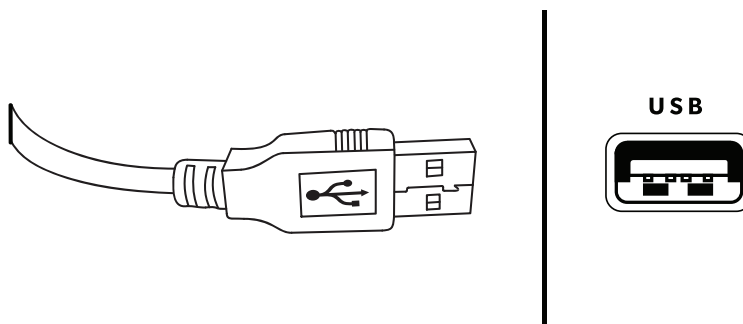


#### IMPORTANT

Install the downloaded software and drivers before you connect the scanner.

### 3. Connect the Scanner

USB Cable to PC



For more details on settings, download the complete user guide at [www.simplescan.com/setup-S1](http://www.simplescan.com/setup-S1)

Thank you choosing SimpleScan. We appreciate your business and are here to help if you need us.  
Need Help? Contact us at [www.simplescan.com/support](http://www.simplescan.com/support)